

BRICKYARD EAST

BRICKYARD EAST

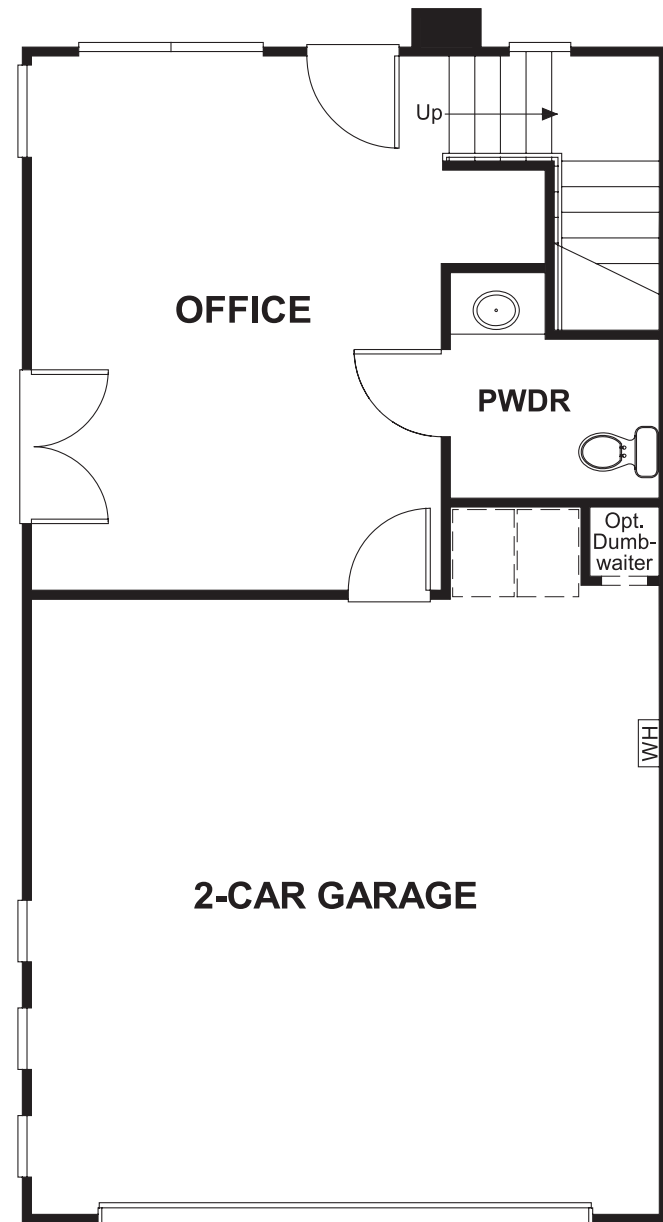
BRICKYARD EAST
BLOOMBERG

APPROX. SQUARE FEET: 1,700
STORIES: 3

BEDROOMS: 3
GARAGE: 2-CAR

BRICKYARD EAST
BLOOMBERG

FLOOR PLAN
LOWER FLOOR



BRICKYARD EAST

CITYSCAPE COLLECTION by Richmond American

APPROX. SQUARE FEET: 1,700
STORIES: 3
BEDROOMS: 3
GARAGE: 2-CAR

This 3-story plan features an office with a powder on the first floor (w/2 car garage), the second story is 3 bedrooms and 2 baths, the master has a WIC, private water closet and double sinks, the third floor features the living, dining and kitchen with a half bath and a balcony for entertaining. The Roof Deck is a great place to have BBQ's, entertain or just relax and hang out. The 240 sq ft roof deck is a great use of space for entertaining.



COMMUNITY LOCATION
2026 Placentia Avenue
Costa Mesa, CA 92627
800-852-9714

HOME GALLERY
5171 California Avenue, Suite 110
Irvine, CA 92617
800-852-9714



COMMUNITY LOCATION
2026 Placentia Avenue
Costa Mesa, CA 92627
800-852-9714

HOME GALLERY
5171 California Avenue, Suite 110
Irvine, CA 92617
800-852-9714

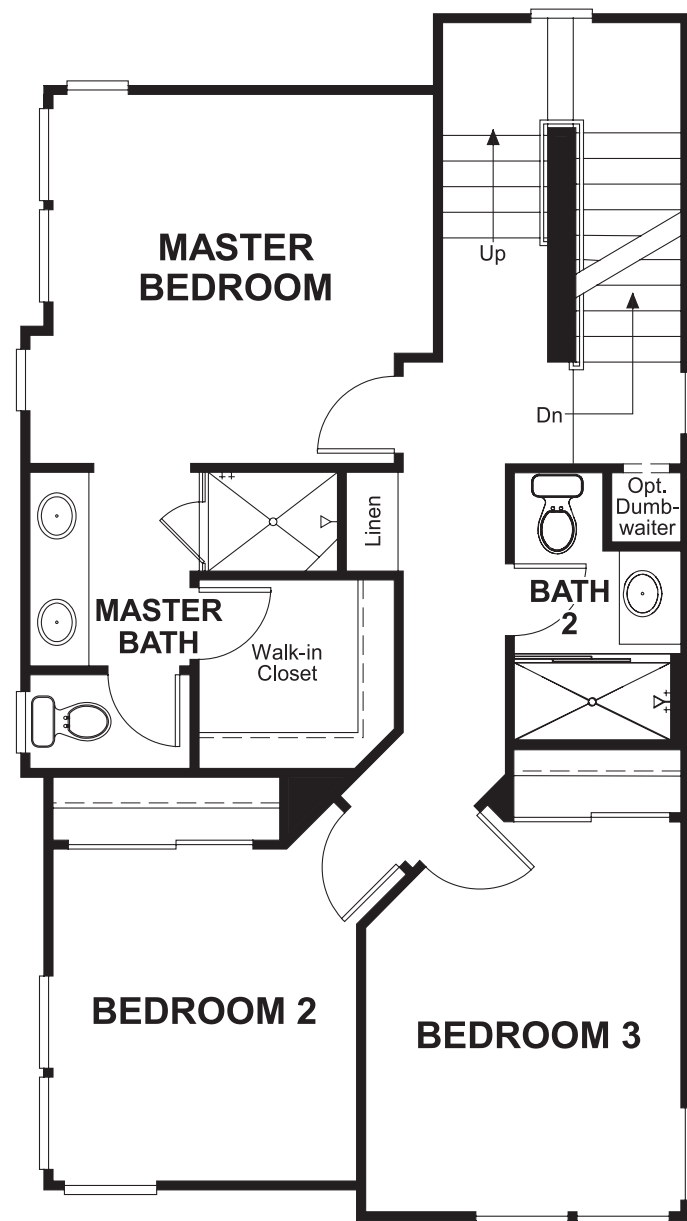


RICHMONDAMERICAN.COM/BRICKEAST

Floorplans and renderings are conceptual drawings and may vary from actual plans and homes as built. Options and features may not be available on all homes and are subject to change without notice. Actual homes may vary from photos and/or drawings which show upgraded landscaping and may not represent the lowest-priced homes in the community. Features may include optional upgrades and may not be available on all homes. Square footage numbers are approximate and are subject to change without notice. Prices, specifications and availability subject to change without notice. ©2015 Richmond American Homes, Richmond American Homes of Maryland, Inc. California Department of Real Estate - Real Estate Broker, Corporation License Number 01842595. 11/17/2015

Floorplans and renderings are conceptual drawings and may vary from actual plans and homes as built. Options and features may not be available on all homes and are subject to change without notice. Actual homes may vary from photos and/or drawings which show upgraded landscaping and may not represent the lowest-priced homes in the community. Features may include optional upgrades and may not be available on all homes. Square footage numbers are approximate and are subject to change without notice. Prices, specifications and availability subject to change without notice. ©2015 Richmond American Homes, Richmond American Homes of Maryland, Inc. California Department of Real Estate - Real Estate Broker, Corporation License Number 01842595. 11/17/2015

FLOOR PLAN MAIN FLOOR



FLOOR PLAN UPPER FLOOR

